

We create the technology to connect the world

NOKIA

June 2017



# Urbanization is putting increased pressure on cities

**2%**  
of Earth's land  
taken up by  
cities

**55%**  
of all people live  
in cities

**70%**  
of the global  
population will  
live in cities by  
2050

**41**  
mega-cities of  
at least 10  
million  
inhabitants by  
2030

“Managing urban areas has become one of the most important development challenges of the 21st century. Our success or failure in building sustainable cities will be a major factor in the success of the post-2015 UN development agenda.”

John Wilmoth

Director, UN DESA Population Division

**76%**  
of global energy  
use and carbon  
emissions are  
from cities

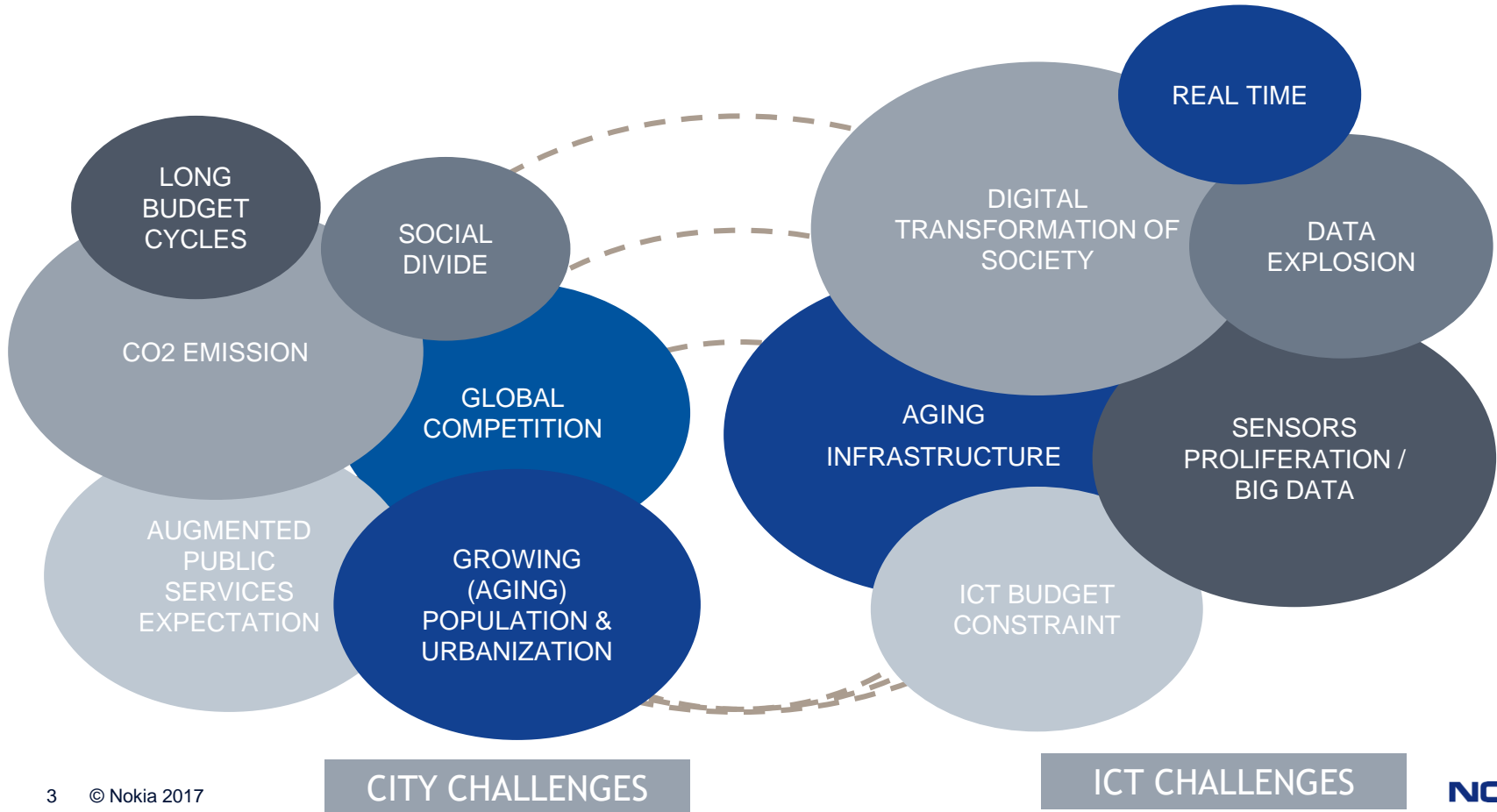
**\$1 trillion**  
estimated cost  
of air pollution in  
OECD countries  
due to road  
transport  
emissions

**+15%**  
average crime  
rate when  
population of a  
city doubles

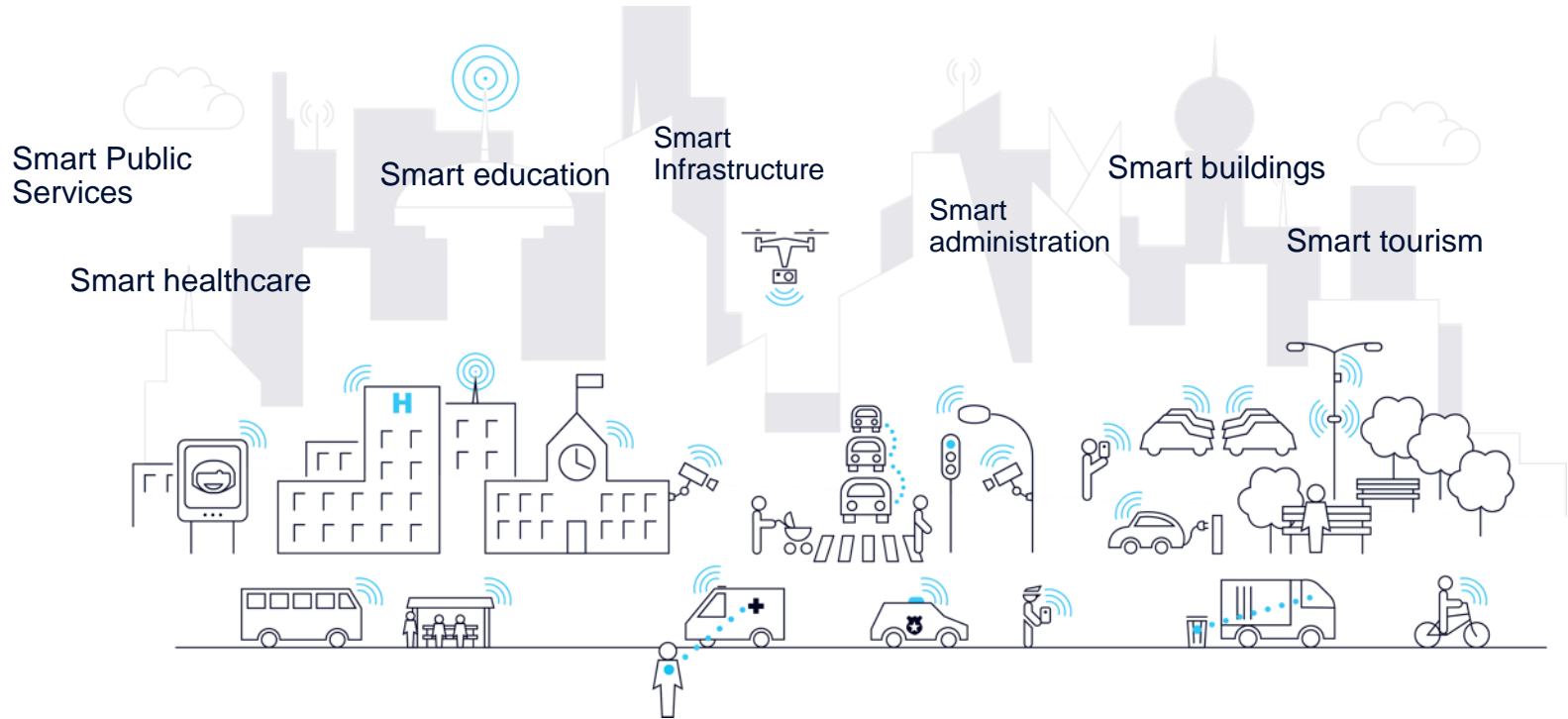
**65%**  
of global GDP  
growth  
generated by  
600 largest  
cities by 2025

Sources: UN DESA, Intergovernmental Panel on Climate Change, IDC, Organisation for Economic Co-operation and Development, McKinsey Global Institute

# CITIES AND CITY LEADERS' CHALLENGES



# What makes a city smart?



Smart applications improve people's quality of life, engagement, bolster innovation and social and economic development, and make cities more attractive places to live, visit and do business.