

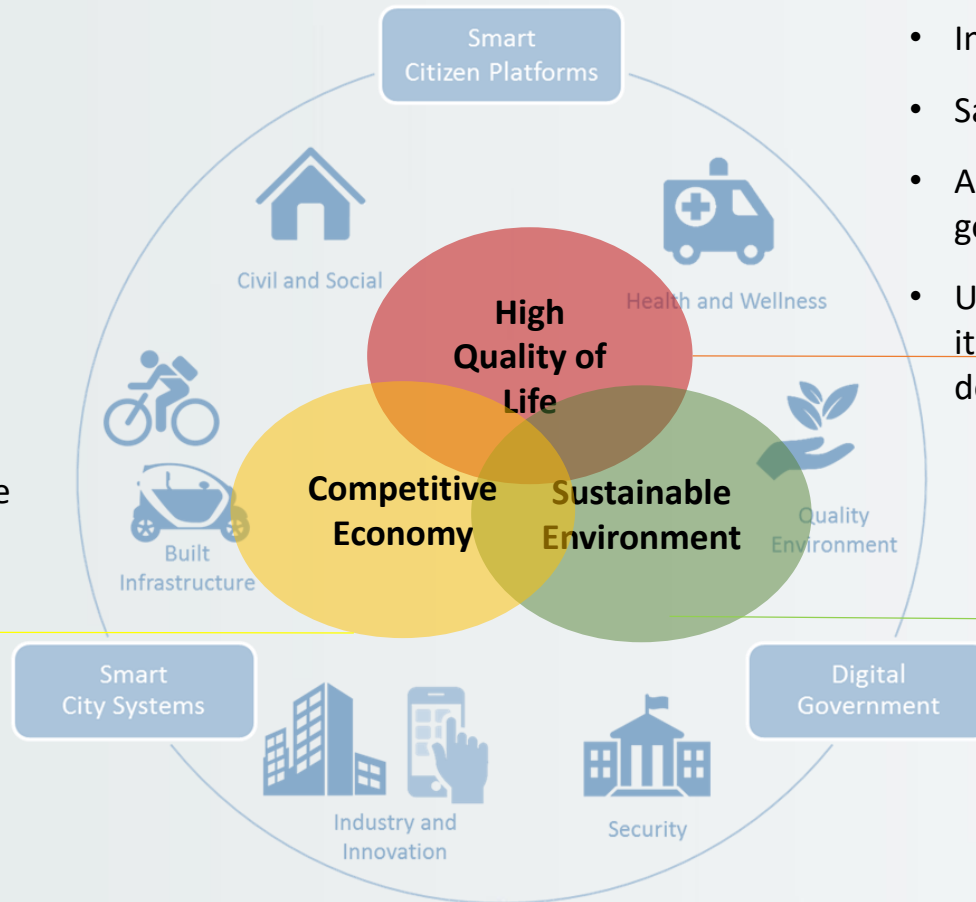
Developing A Smart City – The Liveable And Sustainable Perspective

Zhou Yimin





Smart City – Goals



- Resilient economy
- Competitive workforce
- Inclusive growth

- Inclusive community
- Safety & security
- Accessible and adequate public goods and services
- Unique city character through its culture, heritage and urban design

- Clean environment
- Resource management
- Green & Healthy Ecosystems
- Urban resilience

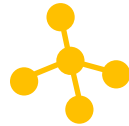
Facts on Singapore

- Population of **5.61** mil
- Land area of **719** km²
- **7,800** persons/km² density
- Very **limited** natural resources
- **Essential** needs of a country for defence, accessibility (airport, sea port), basic survival (e.g. water supply and catchment)



Laying the Foundation Right

“Smart” principles to guide our urban development towards the sustainable and liveable outcomes



Integrated Master Planning & Development

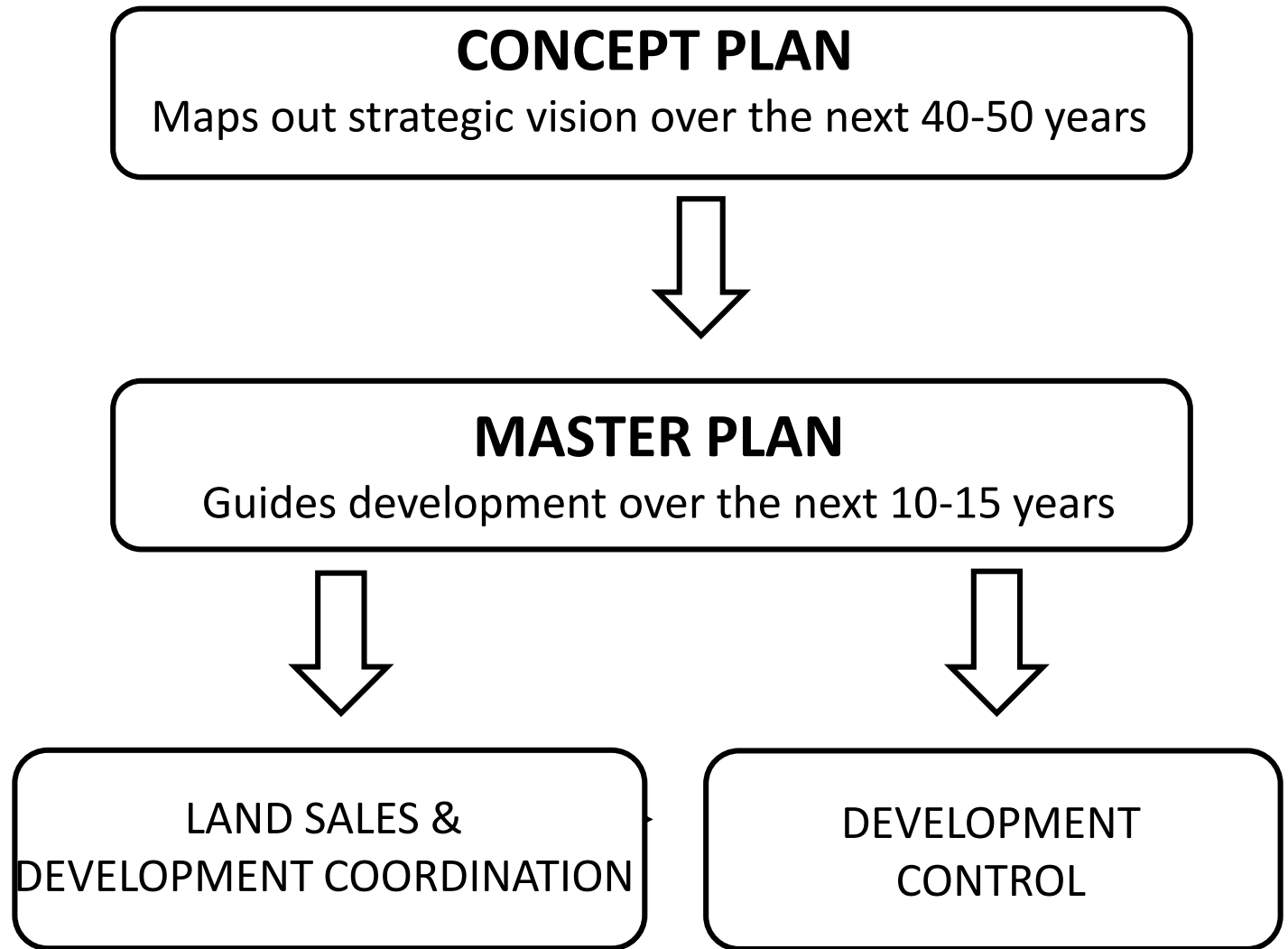
- Think long term
- “Fight productively”
- Build in flexibility
- Execute effectively
- Innovate systematically



Dynamic Urban Governance

- Lead with vision and pragmatism
- Build a culture of integrity
- Cultivate sound institutions
- Involve stakeholders
- Work with markets

Planning and Development Framework



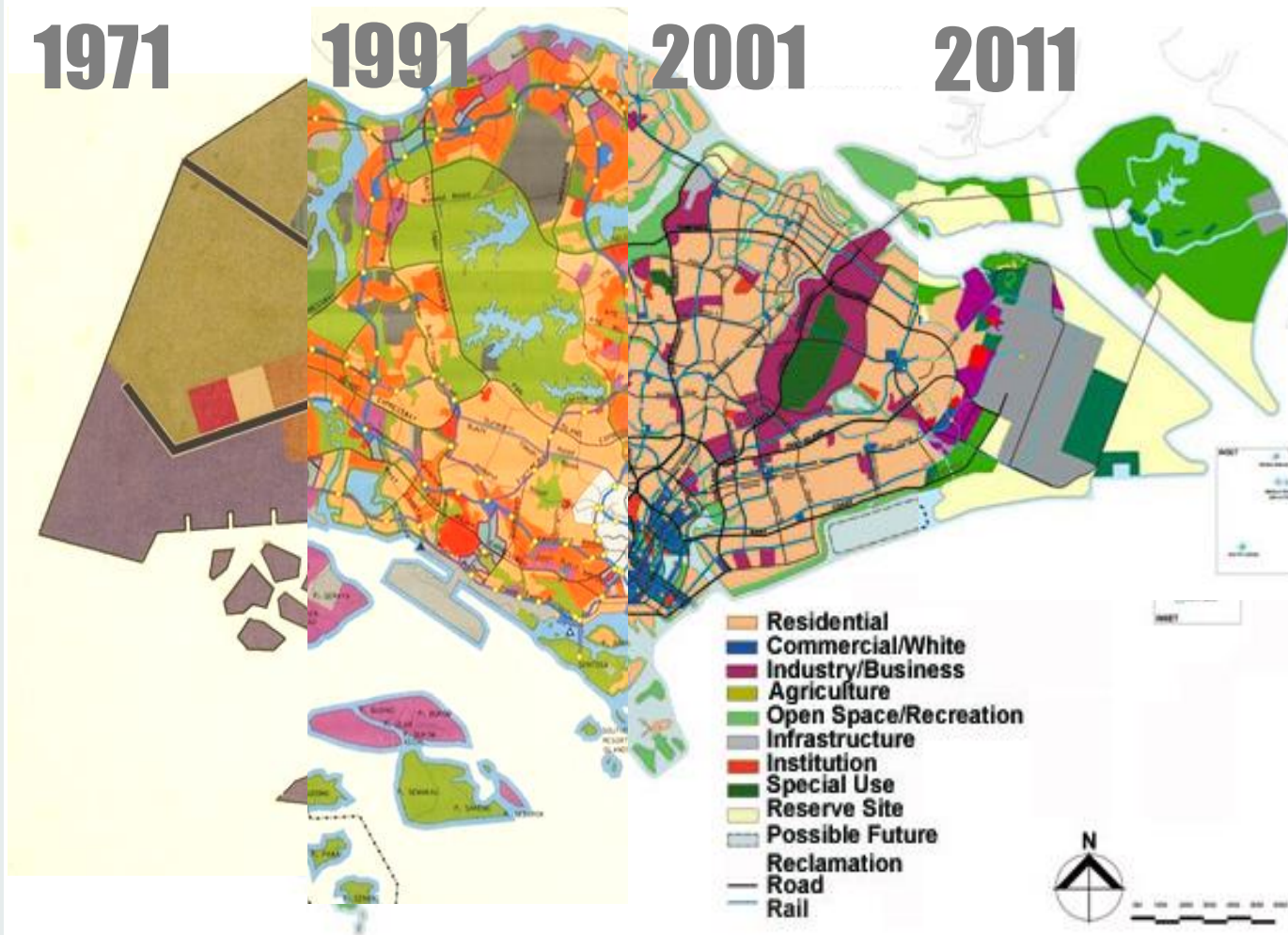
Concept Plan

1971

1991

2001

2011

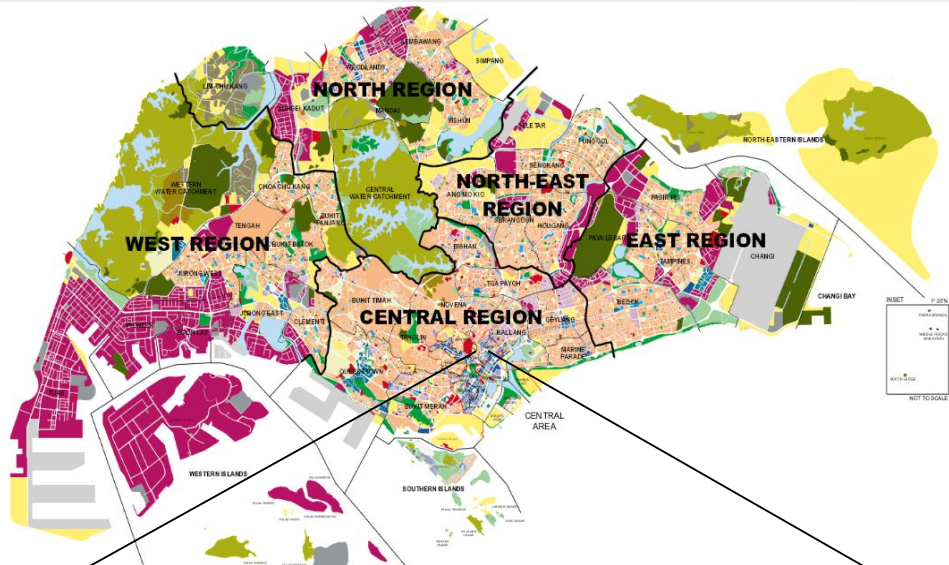


Master Plan

Provide detailed land use plan to guide development for individual land plot.

Provide transparency and facilitate efficient development process.

Reviewed periodically and systematically to keep pace with the development trends and new demands.



Whole-of-Society Effort

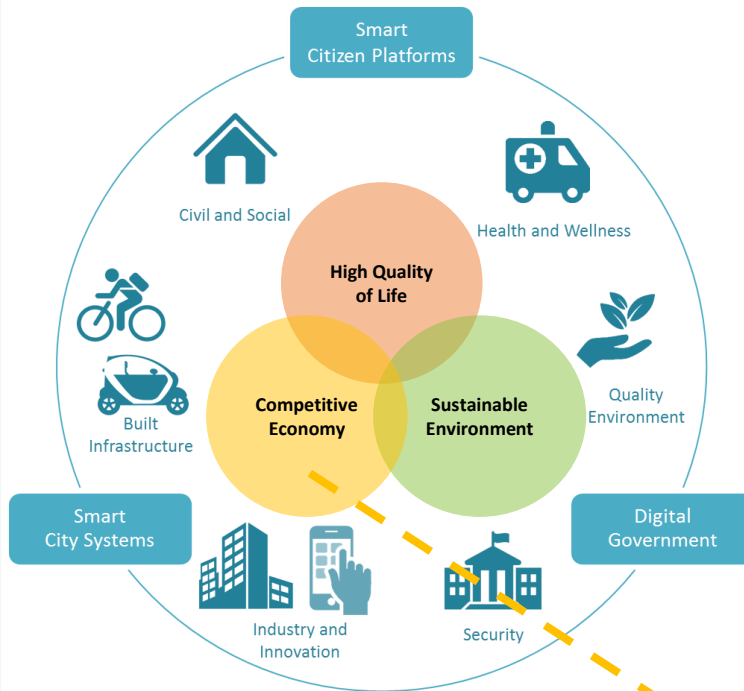
A multi-agency and multi-stakeholder effort; with public consultation

Mechanism/ platforms in place to facilitate this whole-of-government approach and to iron out conflicts and trade-offs

Example: Master Plan Committee (MPC); Garden City Action Committee (GCAC)

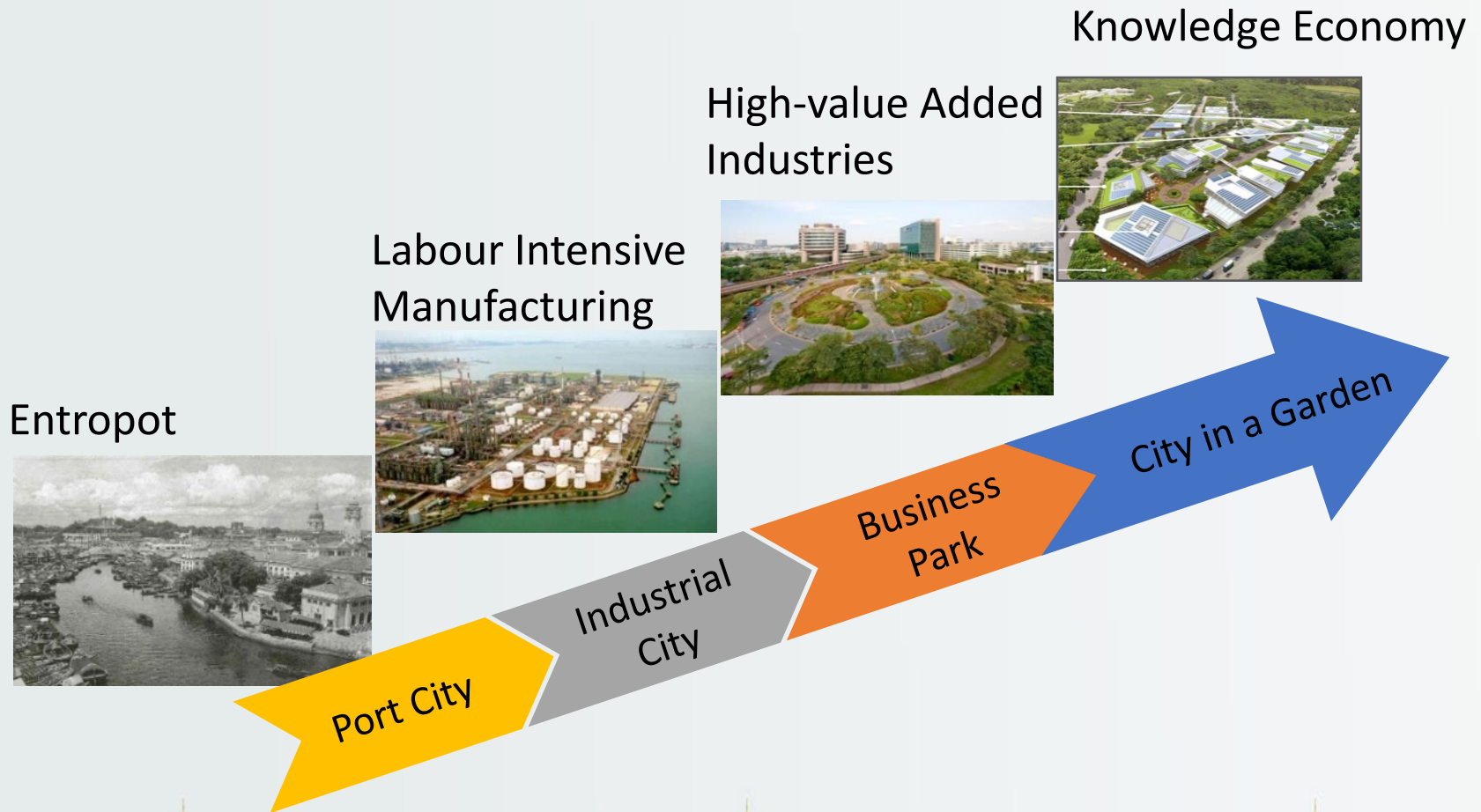


Competitive Economy

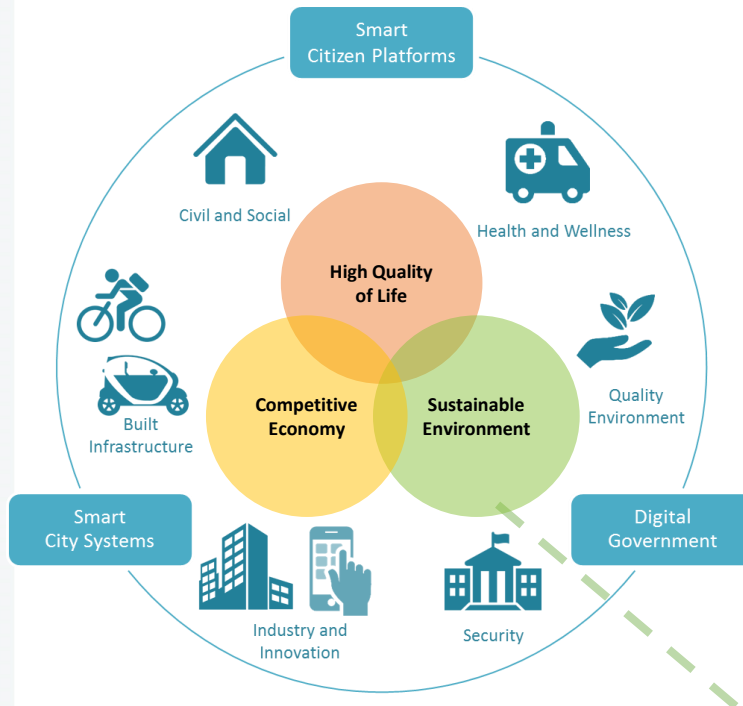


1. Resilient Economy
2. Competitive Workforce
3. Inclusive Growth

Competitive Economy

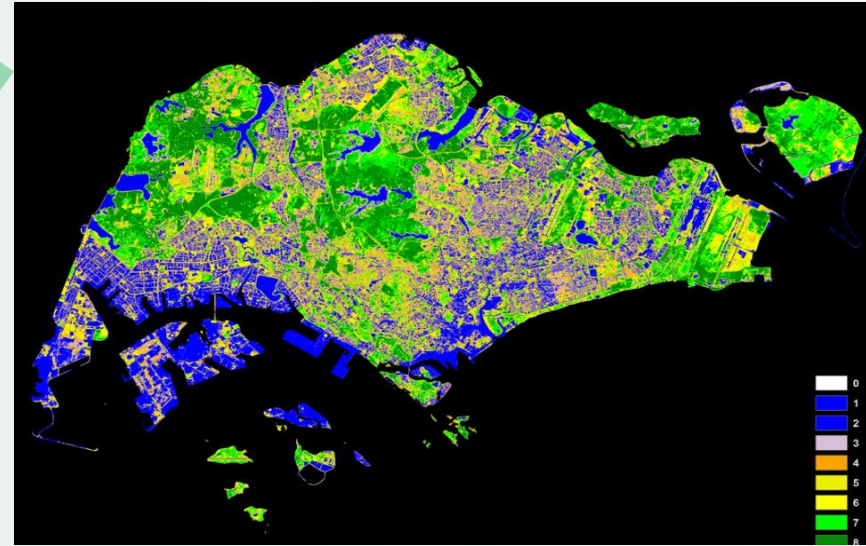


Sustainable Environment

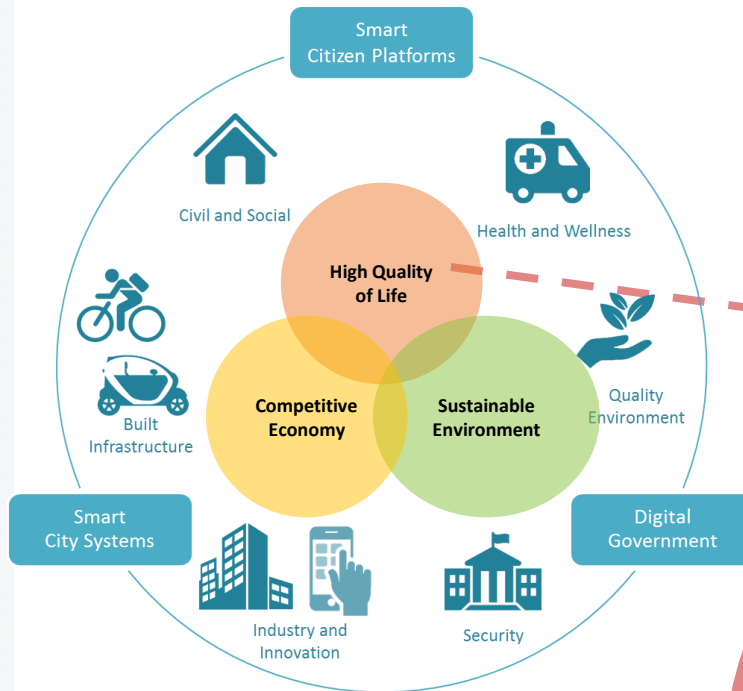


1. Adequate land, water and energy to meet long term needs.
2. Clean and good quality environment (*air, water, waste management, noise level*)
3. Green & Healthy Eco-Systems
4. Resilient to Environmental Risks (*climate change, natural disasters, food security*)

Sustainable Environment



High Quality of Life



1. Safe & Secure environment
2. Equitable & Inclusive society
3. Accessible & Adequate public goods and services
(*transport, water, sanitation, health system*)
4. Affordable & Diverse social, recreational & cultural aspects to meet essential needs

High Quality of Life

Treeledge @ Punggol



Clementi

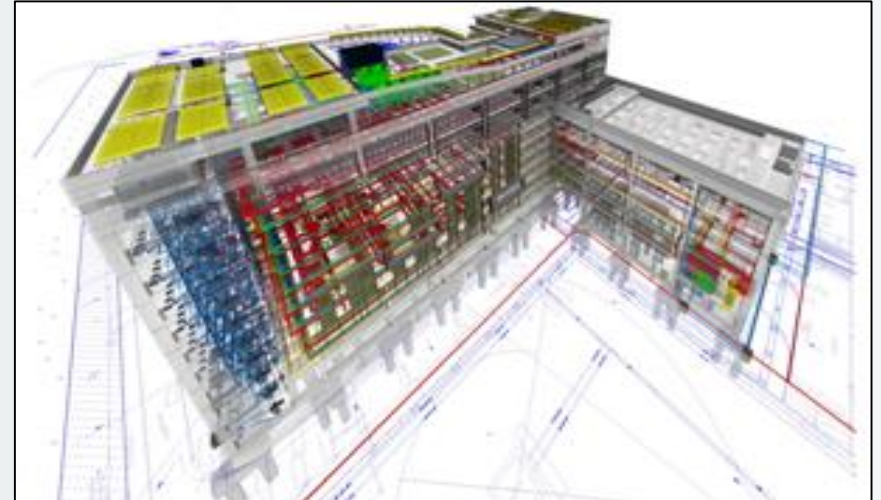


Pinnacle @ Duxton

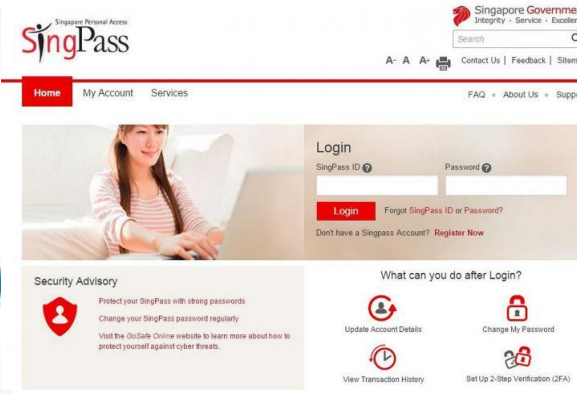
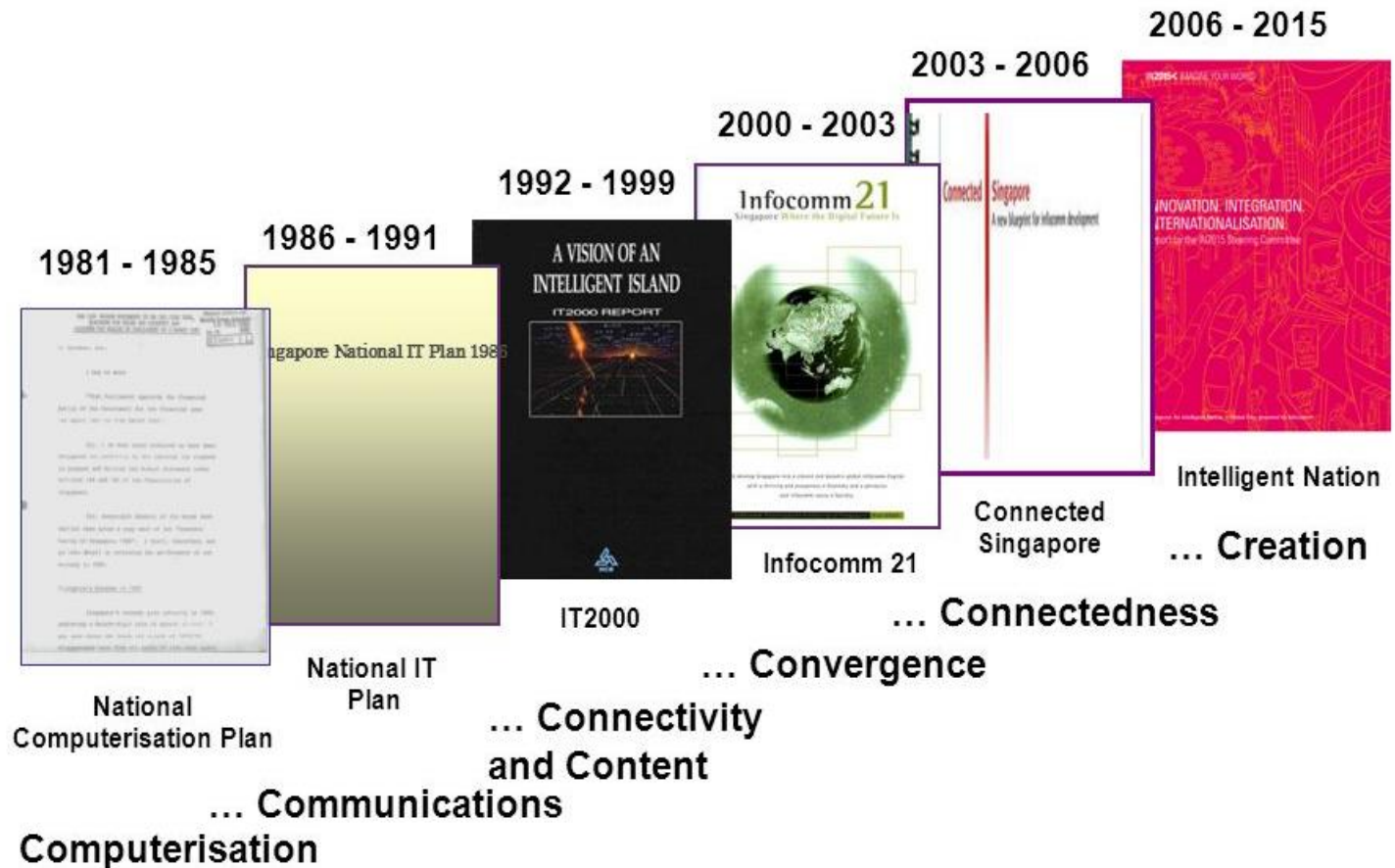
- **High-density, high-rise** flats built since independence when it was unpopular in other cities. Today, 80% of residents live in public housing flats.
- **Self-contained towns** with schools, libraries, clinics/hospitals, supermarkets, F&B outlets, accessible transportation, and recreational facilities.
- Ensure **social integration and community identities** through various programmes.



Intelligent Systems in Various Urban Domains



Foundation for Smart City





**Home
&
Environment**



**Smart
Mobility**



**Healthcare &
Enabled
Ageing**



**Public Sector
Services**

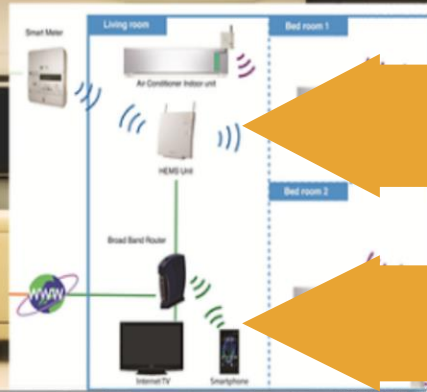


**Business
Productivity**



Home & Environment

Enhance safe, sustainable and liveable living environment



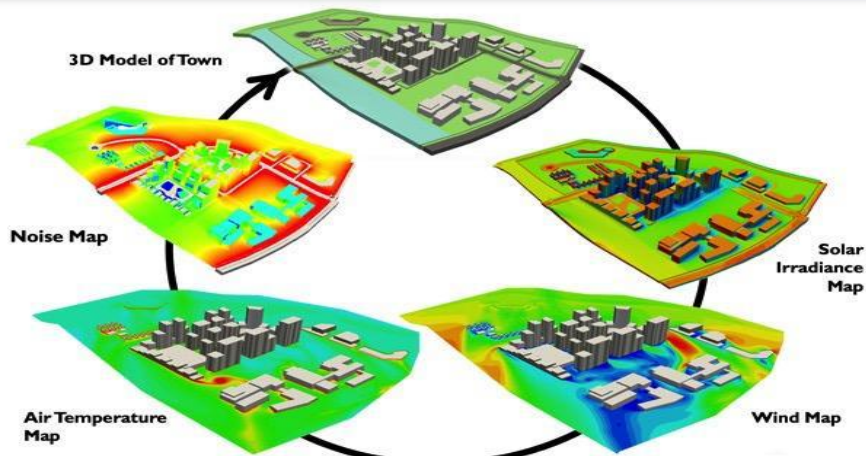
LED Lighting + Motion Sensors



Regenerative System & Fuel Cells for Lifts



Smart Metering & In-home Display Test Bed



Smart Mobility

Optimise space for more efficient, safe, reliable and enhanced transportation

ONE MOTORING
Your Fast Track To Complete Motoring

Brought to you by Land Transport Authority

About Us Contact Us Useful Links Sitemap Feedback

ESERVICES INFORMATION & GUIDELINES ON-THE-ROADS MOTORING BUZZ HAPPENINGS AUTOSHOP LOG IN

THE BIG STORY II Category C diesel vehicles has been extended to 31 July 2019. | For better journey planning, check the estimated arrival time and

SPOTLIGHT
Singapore Corporate Access
CoriPass
SECURITY | EASE OF USE
BETTER
FIND OUT MORE

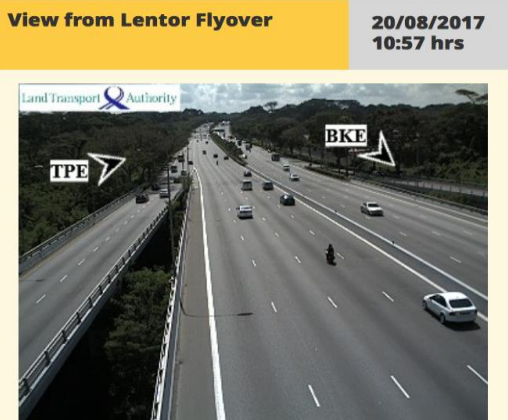
NEWS RELEASE
02 Aug 2017
Registration of Power-Assisted Bicycles to Start on 14 August 2017
31 Jul 2017
No Change to ERP Rates on ERP-Priced Roads and Expressways or 3rd Quarter 2017

TRAFFIC CAM
Woodlands Causeway (Towards Johor)
20 AUG 2017 10:54 HRS
SELECT A LOCATION

COE PRICES
Results for AUGUST 2017 1st Open Bidding Exercise
\$5,701 —
CAT D
MOTORCYCLE

TRAFFIC NEWS
10:52 Vehicle breakdown on BKE (towards PIE) before SLE Exit.
20 AUG 2017
10:42 Vehicle breakdown on CTE (towards AYE) after PIE(Jurong) Exit. Avoid lane ...
20 AUG 2017

I WANT TO ...
drive buy sell maintain participate
Ask Jamie @ LTA (Beta)
Type your question Copy to clipboard

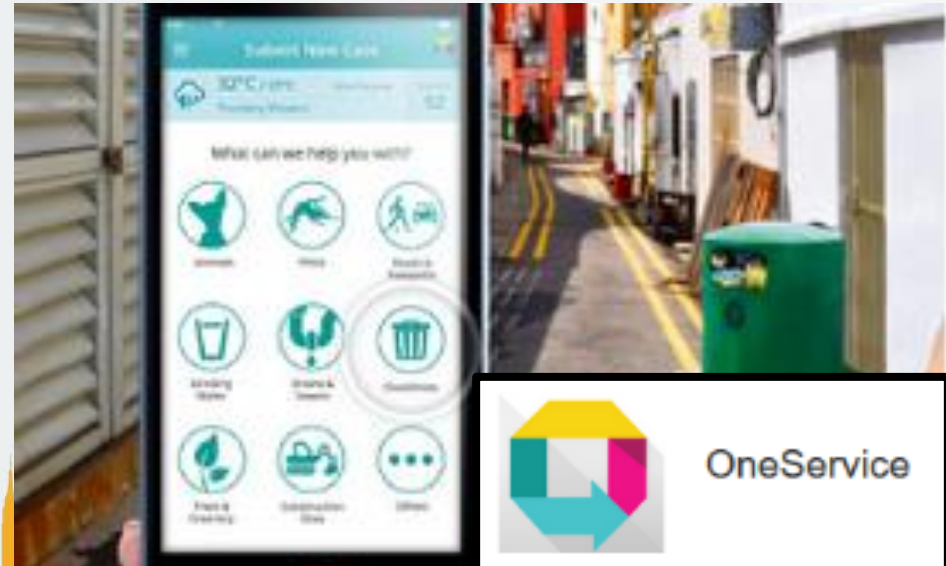
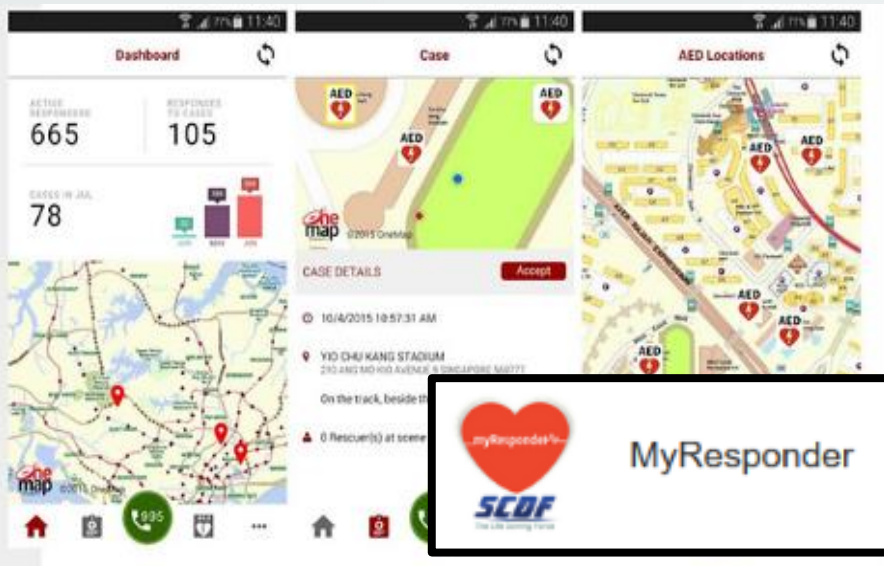


Public Sector Services

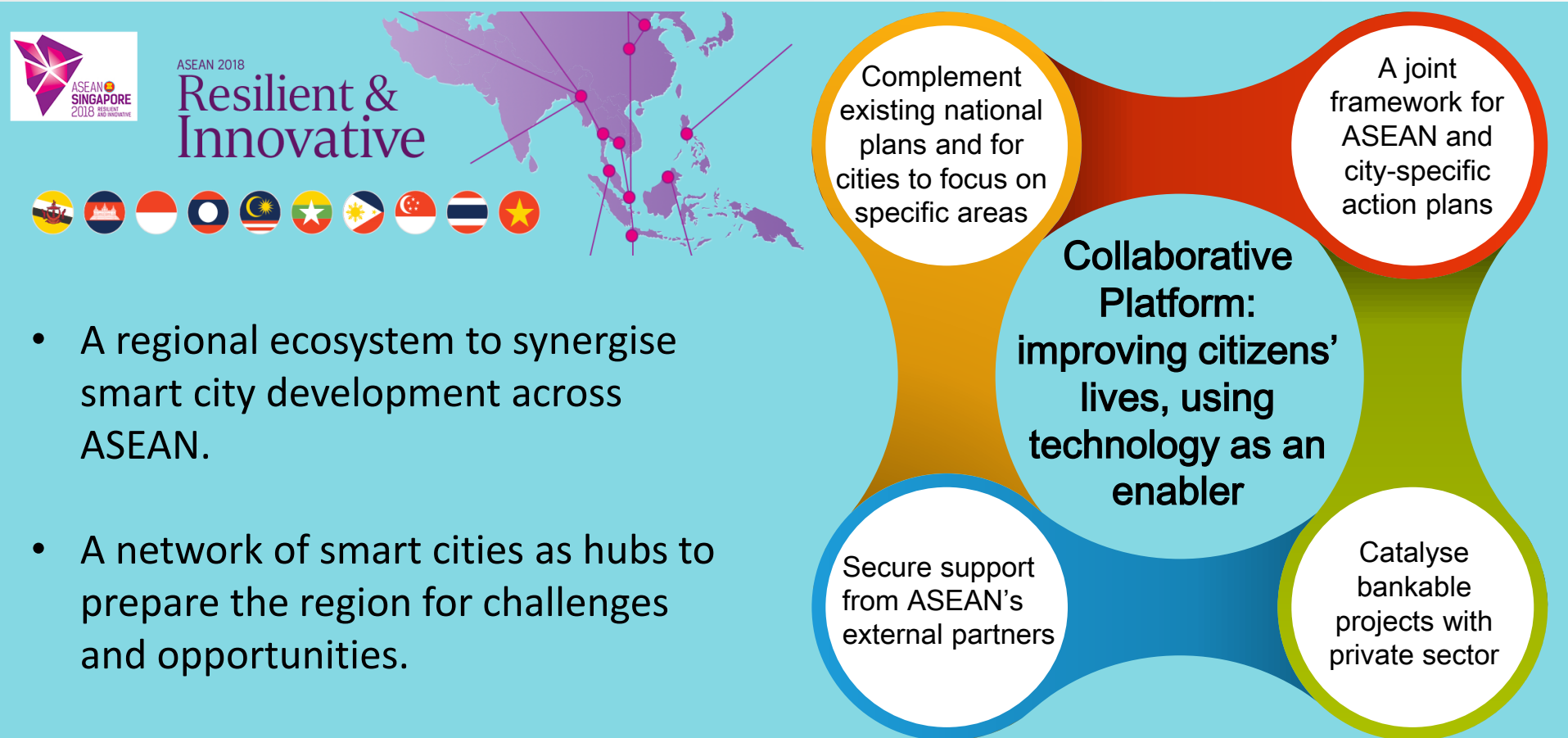
Tech-enabled solutions to enhance quality of public services



- Collection of ground sensing data such as crowd-sourcing, civil engagement and government data sharing portal
- Greater sense of community ownership, participation and problem-solving on the Internet



ASEAN Smart Cities Network (ASCN)





26 CITIES



INDUSTRY
PARTNERS



15 EXTERNAL
PARTNERS

ASEAN

SMART CITIES NETWORK

Pilot Cities



ASEAN Smart Cities Framework

Version 2

(Updated as of 14 June 2018)

SMART CITY STRATEGIC OUTCOMES



URBAN SYSTEMS

- Integrated Master Planning and Development
- Dynamic and Adaptive Urban Governance

DEVELOPMENT FOCUS AREAS

Civic & Social

- Social Cohesion
- Culture and Heritage
- Tourism
- Public and Municipal Services

Health and Well-being

- Housing and Home
- Healthcare
- Education

Safety and Security

- Resource Security
- Cybersecurity
- Public Safety, City Surveillance and Crime Prevention

Quality Environment

- Clean Environment
- Resource Access and management.
- Urban Resilience

Built Infrastructure

- Utilities
- Mobility and Transportation
- Buildings and Construction

Industry and Innovation

- Business & entrepreneurship
- Trade and Commerce
- Upskilling
- Technology Incubation
- Research

ENABLERS

Digital Infrastructure & Applications

Partnership & Funding





CENTRE for
LiveableCities
SINGAPORE

Thank You!